

# SONY®

## Stereo Headphones

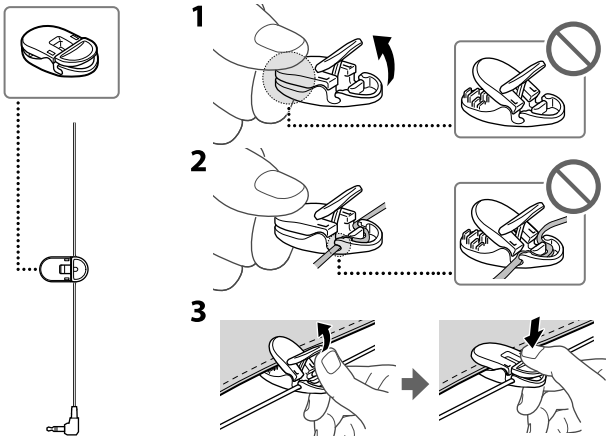
Operating Instructions  
使用説明書  
사용설명서



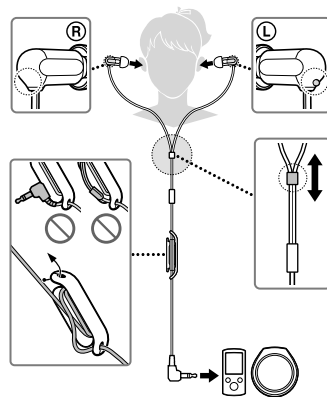
4-439-626-12(1)

XBA-10

### Clip / 線夾 / 클립

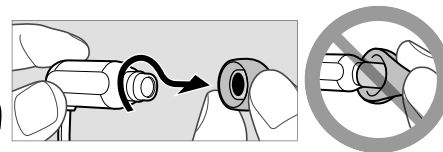
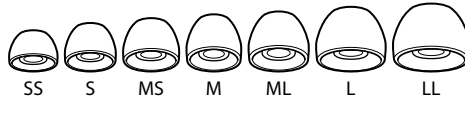


### How to use / 使用方法 / 사용 방법



### Earbuds / 耳塞 / 이어버드

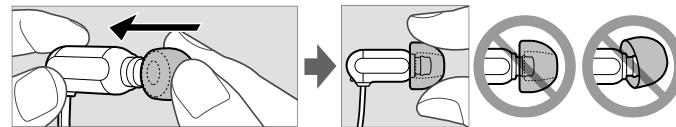
Hybrid silicone rubber earbuds  
混合矽膠耳塞  
하이브리드 실리콘 고무  
재질로 된 이어버드



Noise isolation earbuds  
噪音隔離耳塞  
노이즈 제거 이어버드



Pressure-relieving urethane cushion  
氨基甲酸酯釋壓泡棉  
압박감을 줄여  
주는 우레탄 쿠션



XBA-10

### English Stereo headphones

#### Features

- Balanced Armature driver unit  
Micro-size Balanced Armature driver unit (full-range) reproduces smooth and clear vocal sound.
- High quality PCOCC cord  
PCOCC cord to minimise sound transmission loss and reproduce a clear high quality sound.
- Double Layered Housing  
Liquid Crystal Polymer inner housing and special ABS outer housing reproduces clear, distortion-free mid-high range.
- Noise-Blocking design and various ear-bud sizes  
Noise-Blocking design, with 10 sets of ear-buds to choose from, for optimum attenuation of ambient noise and minimum sound leakage.
- Super-small body  
Balanced Armature driver unit allows for a super small body, and ultimate wearing comfort.
- Serrated cord  
Serrated cord and cord slider for tangle-free use.

#### Specifications

**Type:** Closed, Balanced Armature  
**Driver unit:** Balanced Armature  
**Power handling capacity:** 100 mW (IEC\*)  
**Impedance:** 24 Ω at 1 kHz  
**Sensitivity:** 108 dB\*\*  
**Frequency response:** 5 Hz – 25,000 Hz  
**Cord:** 1.2 m cord, using PCOCC (Y-type)  
**Plug:** Gold-plated L-shaped stereo mini plug  
**Mass:** Approx. 3 g (without cord)  
**Supplied accessories**  
 Hybrid silicone rubber earbuds: SS (red) (2), S (orange) (2), MS (yellow) (2), M (green) (attached to the unit at the factory) (2), ML (blue) (2), L (light blue) (2), LL (purple) (2) / Noise isolation earbuds: S (orange) (2), M (green) (2), L (light blue) (2) / Cord adjuster (winds cord up to 50 cm) (1) / Clip (1) / Carrying pouch (1)  
 \* IEC = International Electrotechnical Commission  
 \*\* 150 mV input  
 Design and specifications are subject to change without notice.

Optional replacement earbuds can be ordered from your nearest Sony dealer.

#### About noise isolation earbuds

Supplied noise isolation earbuds provide a snug fit for effective attenuation of ambient noise.

#### Notes

- Prolonged use of snugly fitting earbuds may strain your ears. If you experience discomfort, discontinue use.
- The pressure-relieving urethane cushion is extremely soft. If it breaks or detaches from the earbuds, it will not take its correct position and the earbuds will lose their noise isolation function.
- The urethane cushion may deteriorate over time. If the pressure-relieving power is lost and the urethane cushion hardens, the earbuds may lose their noise isolation function.
- Do not wash the earbuds. Keep them dry, otherwise they may deteriorate quickly.

#### About hybrid silicone rubber earbuds

Keep earbuds clean. To clean the earbuds, wash them with a mild detergent solution.

#### Removing the headphones

After use, remove the headphones slowly.

#### Note

Headphones are designed to fit closely in your ears. If the headphones are pressed hard while in use or taken off too quickly, they may cause injury. Wearing headphones may produce a diaphragm click sound. This is not a malfunction.

#### Precautions

- High volume may affect your hearing. For traffic safety, do not use while driving or cycling.
- Install the earbuds firmly. If an earbud accidentally detaches and is left in your ear, it may cause injury.

- Do not leave the stereo headphones in a location subject to direct sunlight, heat or moisture.
- Note on static electricity**  
Static electricity accumulated in the body may cause mild tingling in your ears. To minimise the effect, wear clothes made from natural materials.

